

**DYE
MANSION**

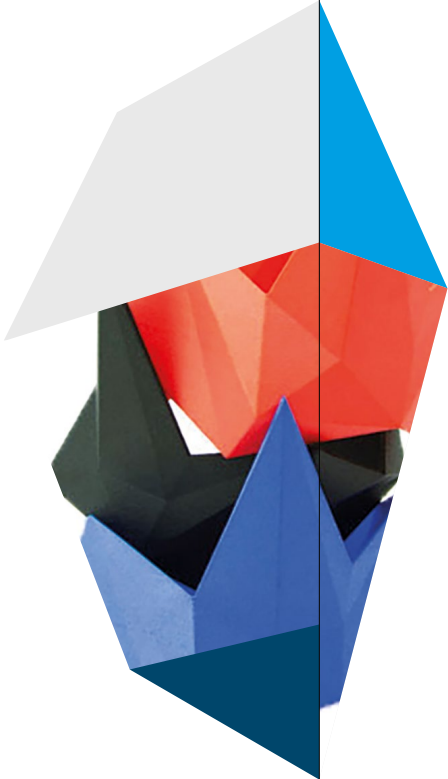


DYEMANSION TECHNOLOGY & PORTFOLIO

**HOME OF A
COLORFUL
FUTURE.**

CONTENTS

- INTRO** 5
 - About DyeMansion 5
 - Our Vision 6
 - Completing the AM value chain 8
 - Factory of the Future 10
- PRINT-TO-PRODUCT WORKFLOW** 12
 - CLEANING**
 - Powershot C | PolyShot Cleaning 14
 - SURFACING**
 - Powershot S | PolyShot Surfacing 16
 - Powerfuse S | VaporFuse Surfacing 18
 - Powerfuse S PP | VaporFuse Surfacing 20
 - CLEANING & SURFACING (2 IN 1)**
 - Powershot Performance Series 22
 - COLORING**
 - DM60 | DeepDye Coloring 24
 - DM60 Add-On Solutions | DeepDye Coloring 28
 - Colors 30
 - Color Matching 32
- CERTIFICATIONS** 33
- DYEMANSION SERVICES** 34
 - 360° Digital Services 34
 - Benchmark & Application Centers 36
 - Technical Service 38
- TECHNICAL WHITEPAPERS** 39
- INDUSTRIES** 41
- PARTNER PLATFORM** 42
- GET STARTED & CONTACTS** 46





WE TURN 3D-PRINTED RAW PARTS INTO HIGH VALUE PRODUCTS

DyeMansion is the global leader in connected post-processing workflows for industrial polymer 3D-printing that turn 3D-printed raw parts into high-value products. From perfect fit eyewear to personalized car interiors, our technology makes 3D-printed products become a part of our everyday life.

ABOUT DYEMANSION

Starting in 2015 with the first industrial coloring solution for powder bed fusion parts, we extended our portfolio with advanced part cleaning and surfacing solutions for a wider range of 3D-printing technologies in the field of plastics.

Today, our Print-to-Product workflow combines industry-leading hardware with the widest range of color options on the market. Our Industry 4.0 ready systems can be integrated seamlessly into your production. The ability to provide a flexible solution for both small batches and high volumes makes us a trusted partner for your future factories. Through close collaboration with our customers across all industries, our technology and expertise continuously grows with the market.

Reduced cost per part, unmatched quality, and high sustainability are core values that drive each and every innovation we develop. In addition to these principles, finding the right finish for every application is what drives us.



OUR VISION



ENABLING THE ERA OF DIGITAL MANUFACTURING - WHERE 3D-PRINTED PRODUCTS BECOME PART OF OUR EVERYDAY LIFE

We will live in a world with superior products which are tailored to the consumer needs and are manufactured and delivered in a sustainable way.

Driving the industrialization of Additive Manufacturing by developing cutting edge technology, partnering with the best companies in the world to set up the production lines of tomorrow.



COMPLETING THE AM VALUE CHAIN

DyeMansion delivers the finishing touch

Additive Manufacturing has the potential to challenge conventional manufacturing technologies & revolutionize the future.



DESIGN



BUILD



That's where DyeMansion comes into place.

**THE MOST DIVERSE
POST-PROCESSING PORTFOLIO**

PSC

PSS

VFS

DDC

Focus on Powder Bed Fusion technologies

SLS

Compatible with:

SAF, MJF & HSS

Compatible with:

On request

FDM / FFF

Compatible with:

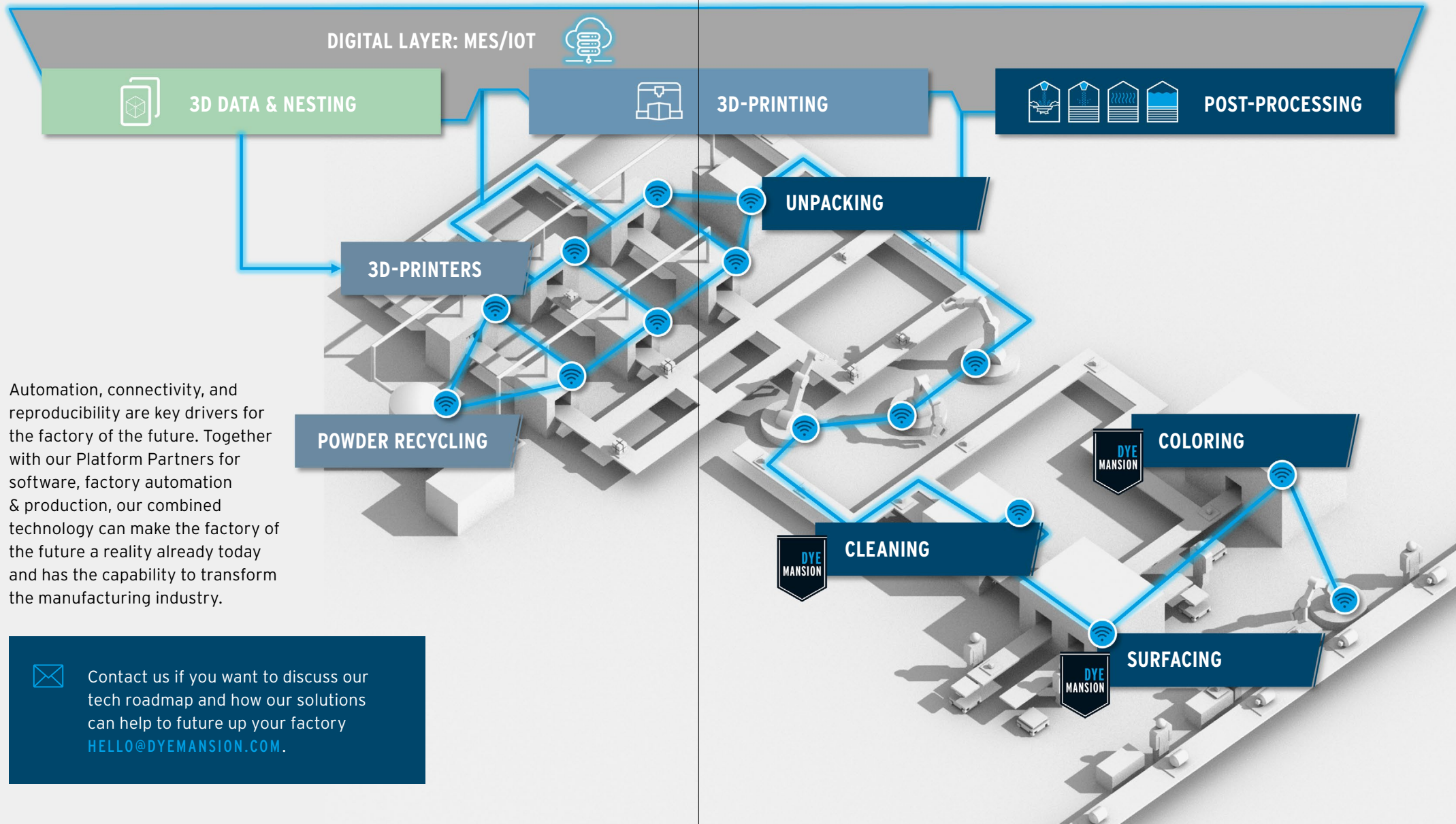
SLA & DLP & CDLP / CLIP

Compatible with:

WE ARE
TECHNOLOGY
AGNOSTIC & CAN
WORK WITH
MOST PRINTING
TECHNOLOGIES
AND MATERIALS!

FACTORY OF THE FUTURE

Future up your factory and realize the production lines of tomorrow



Automation, connectivity, and reproducibility are key drivers for the factory of the future. Together with our Platform Partners for software, factory automation & production, our combined technology can make the factory of the future a reality already today and has the capability to transform the manufacturing industry.



Contact us if you want to discuss our tech roadmap and how our solutions can help to future up your factory
HELLO@DYEMANSION.COM.

THE DYEMANSION PRINT-TO-PRODUCT WORKFLOW

A manufacturing ready end-to-end solution



Delivers high-quality parts



Automated, scalable & flexible



Certified solutions for various industries



Works geometry independent



Ensures a reproducible process



Works with various materials & industrial technologies



Reduces cost per part



Is manufacturing ready

WE ARE READY 4.0
THE FUTURE!



Digital Shopfloor Integration

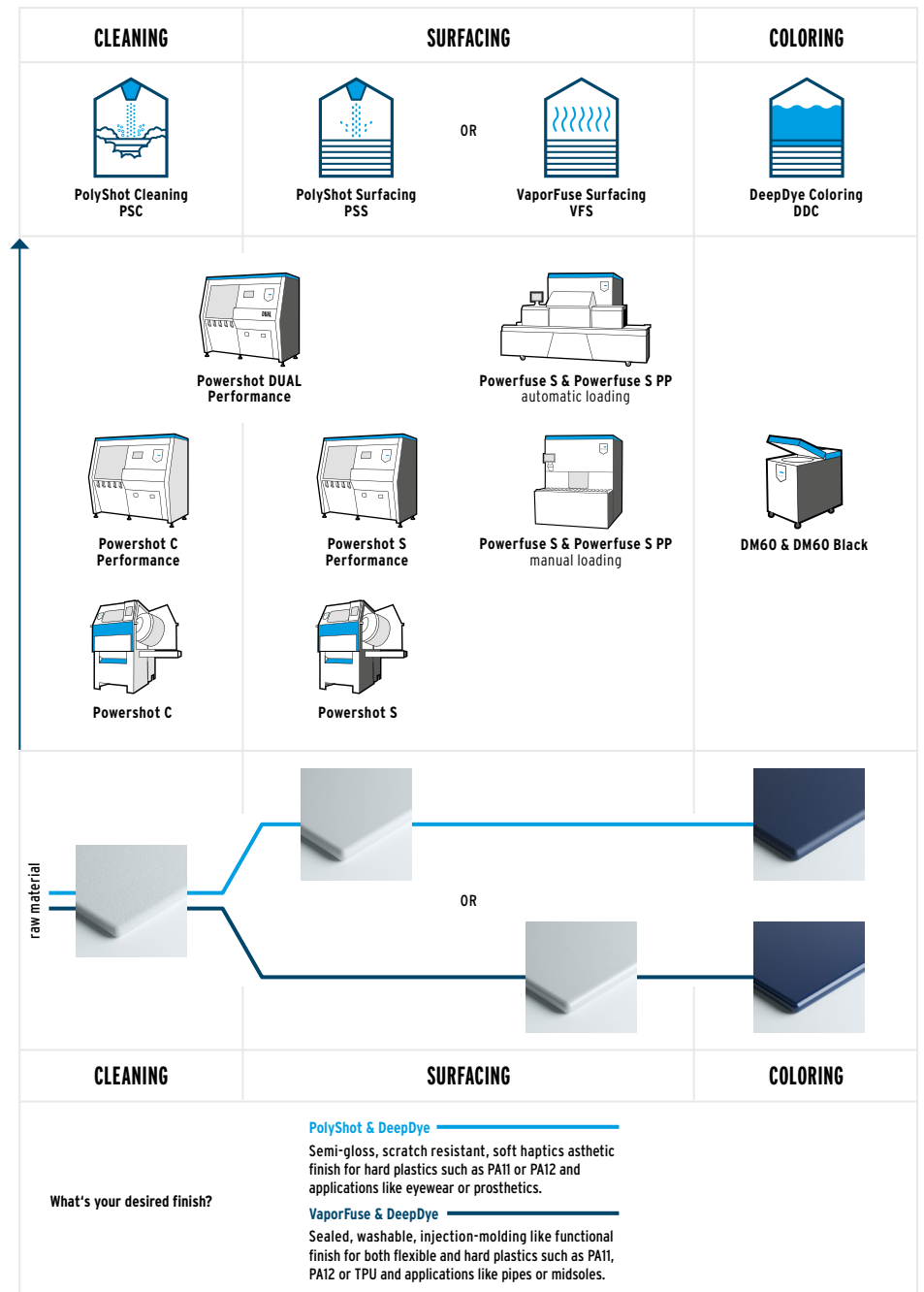


Remote Access



Monitoring & Analysis

INDUSTRY 4.0 READINESS



DYEMANSION POWERSHOT C

The industry standard for easy and efficient part cleaning



PolyShot Cleaning (PSC)

Cleaning process with proprietary plastic media as well as industry standard glass blasting media.



Cycle time: 3-10 minutes

TECHNICAL DATA

PERFORMANCE	
Capacity per run	Up to 3/4 EOS P396, 1x HP Jet Fusion 4200/5200 or close to 1.5x full-sized Stratasys H350 build jobs
DIMENSIONS (L x W x H)	
System	1700mm x 1310mm x 2030mm 66.9inch x 51.6inch x 79.9inch
WEIGHT	
System	490kg 1080lb
POWER SUPPLY	1kW
COMPRESSED AIR CONSUMPTION	Minimum: 1,4m ³ /min at 2.2bar Maximum: 1,8m ³ /min at 5bar

Automated depowdering boosts your production capacity

With our proprietary PolyShot Cleaning (PSC) a mid-sized build job can be cleaned in only ten minutes or less. The time you need for part cleaning and the personnel in your production can be significantly reduced. This boosts your effectiveness and efficiency. By investing in automated part cleaning with the Powershot C, up to four manual blasting systems can be easily replaced. PolyShot Cleaning is compatible with all common powder-bed technologies and delivers residue-free parts for brilliant colors.

Gentle part treatment thanks to smart hardware features

The blasting cabinet of our Powershot C is equipped with a rotary basket and is manufactured from stainless steel. Different blasting nozzles and an ionization unit ensure reproducible results. Couple this with a basket with a soft and replaceable lining protecting the parts from damage during the process. Two simultaneously working blasting nozzles are positioned perpendicular to the rotating basket and the contained parts. The cyclone cleans the blasting media constantly. This configuration guarantees an efficient powder removal.

Advanced operator convenience with enhanced ergonomics and process control

Experience a new level of process control with a touchscreen and integrated control-panel. The Powershot C is being operated through a userfriendly interface and pre-installed programs can be started. Individual programs can be configured and saved easily, enabling a fast adaption to your application. With a user-centric design everything can be easily accessed and operated safely. Continuous monitoring allows an efficient and reproducible process.

BEFORE AFTER



White raw material



Grey raw material

"The Powershot C system allows us to reduce processing times in blasting by up to 80%. The surface finish it provides is also much more consistent than parts blasted by hand."



Frederick Wray,
Senior Product Engineer

DYEMANSION POWERSHOT S

The leading blasting system for end-use parts with a superior finish



PolyShot Surfacing (PSS)



Cycle time: 10-15 minutes

TECHNICAL DATA

PERFORMANCE	
Capacity per run	Up to 3/4 EOS P396, 1x HP Jet Fusion 4200/5200 or close to 1.5x full-sized Stratasys H350 build jobs
DIMENSIONS (L x W x H)	
System	1700mm x 1310mm x 2030mm 66.9inch x 51.6inch x 79.9inch
WEIGHT	
System	480kg 1058lb
POWER SUPPLY	1kW
COMPRESSED AIR CONSUMPTION	Minimum: 1,8m ³ /min at 5bar Maximum: 2,5m ³ /min at 7bar

The most efficient surfacing technology to achieve end-use parts

Our proprietary PolyShot Surfacing (PSS) is non-abrasive and works perfectly for hard plastics like PA12 or PA11 across all geometries. Shooting beads accelerated with compressed air equalizes the peaks and lows of the surface, achieving a more homogenous part quality. With a cycle time of only 10 minutes and a capacity of a mid-sized build job per run, the Powershot S works very cost-effectively. Unlike time-consuming abrasive methods like tumbling, PolyShot Surfacing increases your productivity and part quality significantly.

Semi-gloss surfaces with ideal properties: The foundation for superior coloring results

We believe PolyShot Surfacing to be the main basis for maximizing coloring results. The Powershot S delivers unique semi-gloss looks and pleasant haptics for almost every 3D-printed end-use product. Being heavily used since 2016 in various industries, it set totally new quality standards due to enabling the results of improved scratch resistance and homogenous finishes. This is particularly important for further processing steps, like our DeepDye Coloring.

Advanced operator convenience with enhanced ergonomics and process control

Experience a new level of process control with a touchscreen and integrated control-panel. The Powershot S is being operated through a userfriendly interface and pre-installed programs can be started. Individual programs can be configured and saved easily, enabling a fast adaption to your application. With a user-centric design everything can be easily accessed and operated safely. Continuous monitoring allows an efficient and reproducible process.

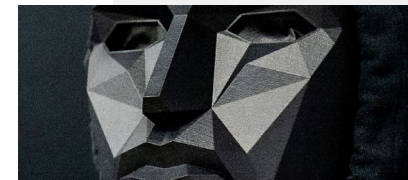
BENEFITS AT A GLANCE



✓ PREMIUM LOOK & FEEL



✓ SCRATCH RESISTANCE



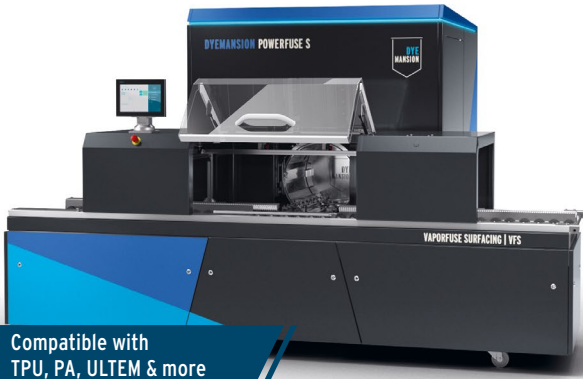
✓ SEMI GLOSS



✓ HIGHLIGHTED TEXTURES

DYEMANSION POWERFUSE S

The green vapor polishing solution for highly industrial manufacturing & surface improvements beyond aesthetics



Compatible with TPU, PA, ULTEM & more



NO PFAS
per- and polyfluorinated alkyl substances, also known as the Forever Chemicals



NON CMR
carcinogenic, mutagenic and reprotoxic



NOT vPvM
very persistent and very mobile



VaporFuse Surfacing (VFS)



Cycle time: 90-180 minutes

TECHNICAL DATA

PERFORMANCE	
Process chamber volume	85l 22.5gal
Basket dimension (L x W x H)	610mm x 340mm x 315mm (385mm) 24.0inch x 13.4inch x 12.4inch (15.1inch)
DIMENSIONS (L x W x H)	
System	1700mm x 1700mm x 2070mm 66.9inch x 66.9inch x 81.5inch
Automatic loading	960mm x 3466mm x 1300mm 37.8inch x 136.5inch x 51.2inch
Manual loading	705mm x 1700mm x 850mm 27.8inch x 66.9inch x 33.5inch
WEIGHT	
System	1600kg 3527lb
Automatic loading	800kg 1764lb
Manual loading	180kg 397lb
POWER SUPPLY	
	Ca. 20kW
COMPRESSED AIR CONSUMPTION	
	Approx. 70l 78.5gal at 6bar 87psi per run

Unbeatable cost per part for high-volume production

Unbeatable cost per part at full production capacity due to high degree of automation and closed loop circulation with integrated solvent recovery. The Powerfuse S is Industry 4.0 ready. Running fully automated 24/7, offering traceability and connectivity via our IoT offering.

Best in class results delivering high-quality surfaces with improved properties

VaporFuse Surfacing (VFS) delivers injection molding-like parts, reducing surface roughness by up to 70%. Parts are sealed, water repellent, and achieve washable surfaces that inhibit bacteria growth. Increased mechanical properties benefit delicate structures and soft materials. Achieve an elongation at break increase by up to 200% depending on your material. The Powerfuse S can smooth inner channels which is unique in the industry and key for pipes or tubes.

The only green vapor polishing technology on the market - non-toxic solvent

The non-toxic VaporFuse VF47 EcoFluid is safe to use (no PFAS, no CMR and no vPvM/PMT). Operating the Powerfuse S does not require protective clothing against chemical hazards. No additional equipment or reconstruction of installation site needed. Vapor polished parts treated with the Powerfuse S can be used for consumer, medical or food & beverage applications.

BEFORE AFTER

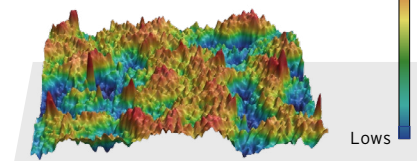


White raw material

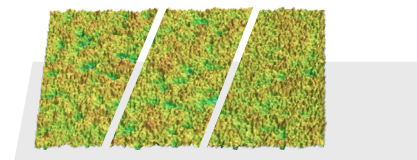


Grey raw material

BEFORE



LIGHT / BALANCED / STRONG



Surface roughness measurement with a 3D profilometer | EOS PA 2200

DYEMANSION POWERFUSE S PP

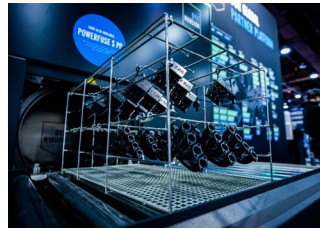
The first ever green vapor polishing solution to smooth 3D-printed PP



Compatible with polypropylene (PP)

This technology enables endless application possibilities for the use of polypropylene in Additive Manufacturing industries such as automotive, medical & chemical tech, consumer goods & prototyping. The sustainable VaporFuse VF44 EcoFluid PP is 100% bio-based and readily biodegradable as well as non-toxic: no PFAS, no CMR, no PvM/PMT.

- ✓ Best in class results delivering high-quality surfaces with improved properties
- ✓ Unbeatable cost per part for high-volume production



Polypropylene parts finished with DyeMansion's VaporFuse Surfacing technology

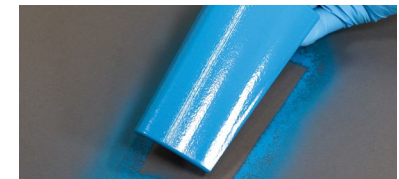
VAPORFUSE SURFACING

Put to the test

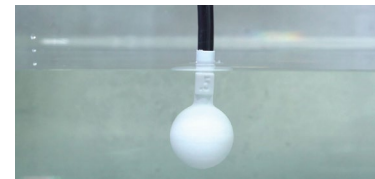
VaporFuse Surfacing not only provides applications with an aesthetic appearance. It also significantly improves some part properties, which enables completely new applications:



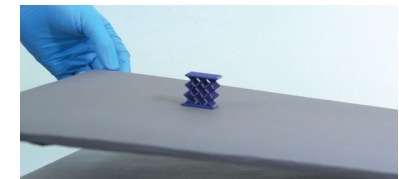
✓ SEALED SURFACES - INSIDE & OUTSIDE



✓ MORE PRODUCTIVE SPRAY PAINTING



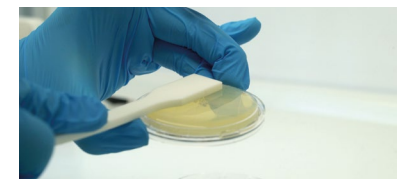
✓ IMPROVED AIRTIGHTNESS



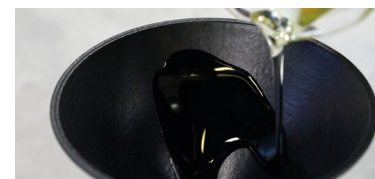
✓ REDUCED FRICTION



✓ IMPROVED STABILITY



✓ BACTERIA INHIBITION



✓ WASHABLE SURFACES



▶ WATCH our test series to learn more & get all the details.

SEE TECHNICAL DATA

> at page 18

Works with all PP materials on the market



DYEMANSION PERFORMANCE SERIES

Next level blasting systems purpose built for the factory of the future & high-volume production with Additive Manufacturing



2 IN 1



PolyShot Cleaning (PSC)



PolyShot Cleaning (PSC) & PolyShot Surfacing (PSS)



PolyShot Surfacing (PSS)



Cycle time: 3-15 minutes each process

TECHNICAL DATA

PERFORMANCE	
Capacity per run	Up to 1x EOS P396, 1.5x HP Jet Fusion 4200/5200 or 3x full-sized Stratasys H350 build jobs
Effective volume of multi belt	55 liters 14.5 gal
Effective dimensions of multi belt (L x W x H)	409mm x 800mm x 325mm 12.2 inch x 31.5inch x 12.8inch
DIMENSIONS (L x W x H)	
System	1630mm x 2205mm x 2097mm 64.2inch x 86.8inch x 82.6inch
Recommended space requirement in operation	2530mm x 2900mm x 2600mm 99.6inch x 114.2inch x 98.4inch
POWER	
Supply Requirements	From 1.2kW up to 2.0kW 400V, 50Hz, 16A
COMPRESSED AIR CONSUMPTION	
	Minimum: 1,4m ³ /min at 2.2bar 49cfm at 32psi Maximum: 1,8m ³ /min at 5bar 64cfm at 73psi

Boost your production performance: Maximum efficiency with the smallest workspace

The Powershot Performance Series is designed for the most demanding applications within AM. The first system with a wide multi belt has an effective process volume of 55 liters and can handle 10kg of parts. While being able to process a full-sized build job, the Powershot Performance series has the smallest workspace requirements on the market. The blasting media sieving and separation unit leads to a lower consumable consumption and results in a reduction of costs. With a short cycle time and a capacity of a full-sized build job per run, the Powershot Performance series is more efficient than any other system available. Complemented by both our proprietary Cleaning & Surfacing processes these systems are designed for high volume production.

Ready to form the factory of the future - now

Our Powershot Performance series blends right into the factory of the future with state-of-the-art automation technology from Siemens. Integrated into your digital shopfloor with ERP/MES connectivity and standardized communication protocols like OPC-UA. Monitor and analyze all data surrounding the state and condition of the systems for performance & process optimization (with standardized IIoT messaging protocols like MQTT). Via a secure & certified VPN connection the systems can be accessed remotely for maintenance and troubleshooting to increase system uptime. This ultimately results in an unmatched performance of your production lines.

Setting the stage for automation in Additive Manufacturing

All three versions of the Powershot Performance Series provide an intuitive user-friendly interface with optional user-levels. Pre-installed programs with specifically developed process parameters can be controlled. Your individual process parameters can be configured and saved easily, enabling a fast adaption to each specific application. Automatic part handling such as automatic unloading of your processed parts supports the integration into the DyeMansion Print-to-Product Workflow and the complete Additive Manufacturing chain. The design of the system allows for upcoming extension features for automatic loading.

CAPACITY

Up to
1.5x
PART VOLUME



PROCESS TIME

Reduce up to
20%
TIME



EFFICIENCY

Increase up to
2x
EFFICIENCY

DYEMANSION DM60

The leading coloring solution for industrial Additive Manufacturing



DM60 Black for black coloring only available



DeepDye Coloring (DDC)



Cycle time: 150 minutes

TECHNICAL DATA

PERFORMANCE	
Capacity per run	Up to 3/4 EOS P396, 1x HP Jet Fusion 4200/5200 or close to 1.5x full-sized Stratasys H350 build jobs
DIMENSIONS (L x W x H)	
System	950mm x 600mm x 945mm 37.4inch x 23.7inch x 37.0inch
WEIGHT	
System	330kg 662lb
HEATING POWER	8.3kW or 6.9kW
COMPRESSED AIR CONSUMPTION	< 1,5 m ³ per run, dry and oil-free compressed air

Limitless color choices: From standardized data base to tailor-made recipes

Our innovative DeepDye Coloring (DDC) technology offers unlimited color choices. As a DM60 user you benefit from the largest color database. In addition to over 170 RAL and standardized colors, which are ready-to-use without additional development costs and waiting times, our color matching also offers the possibility of creating individual tones for you - from corporate colors to seasonal trend colors and individual skin tones. The fully automatic cleaning program of the DM60 allows a flexible use and a fast color change.

Exact color formulas for a reproducible and traceable process globally available

For a long time, dyeing 3D-printed plastics was a manual, uncontrollable process. We take care of this process and offer a global supply of exact color recipes down to the microgram. This enables an industrial process that could not be easier for the user and can be reproduced any time. The power lies in our color cartridges, which we manufacture depending on base material, finish and desired color. Based on the volume of your parts, we deliver cartridges in four different sizes. These are equipped with an RFID chip that transfers all process parameters QM ready to the DM60.

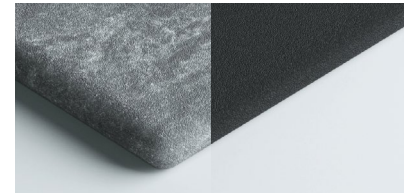
ISO-certified colors for end-use applications across all industries

The demands for 3D-printed products are constantly increasing. Our ISO-certified colors make us a trusted technology partner for biocompatible eyewear or medical orthoses as well as for light and heat resistant automotive interiors. With our extended Colors^x line, we are responding to industry specific requirements and are always looking forward to new input for the further development of our DeepDye Coloring (DDC) technology.

BEFORE AFTER



White raw material



Grey raw material

"We knew that our products would only become marketable when it became possible to apply colors which appeal to our customers. With the DM60 coloring system and their color development, DyeMansion presented us with a real solution to that."

götti
SWITZERLAND

Sven Götti,
CEO

FIND YOUR FINISH

> See next page

FIND YOUR FINISH

Aesthetic overview

White base material



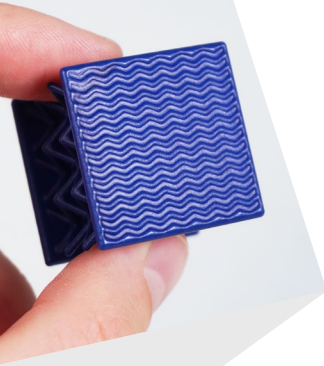
Grey base material



FINISH: POLYSHOT + DEEPDYE



FINISH: VAPORFUSE + DEEPDYE



DYEMANSION DM60 RESERVOIR

The DM60 add-on solution for high-volume black coloring



PERFORMANCE	
Capacity per run	Up to five DM Black dyeing cycles with one DM Black L-R cartridge
DIMENSIONS (L x W x H)	
System	385mm x 350mm x 1640mm 15.2inch x 13.7inch x 64.6inch
WEIGHT	
System	92kg 202.8lb

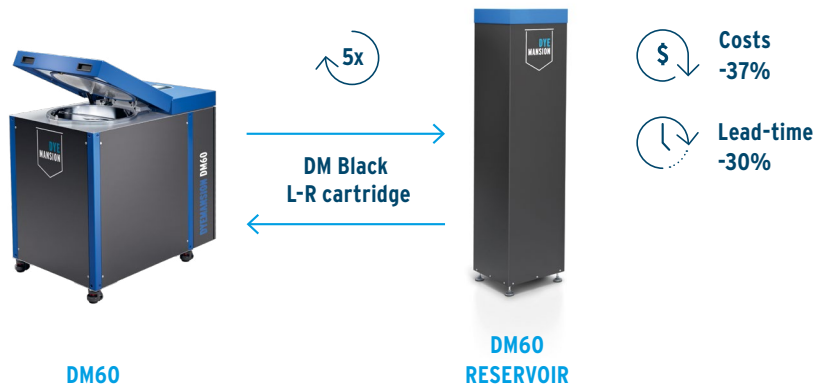
DYEMANSION ROS

For constant water quality & process stability

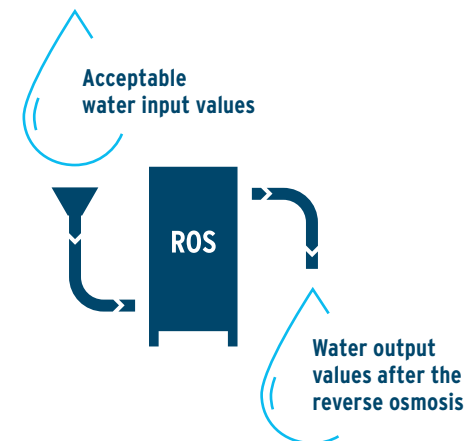


PERFORMANCE	
Capacity per run	Supplies two DM60 with demineralized water
Integrated storage tank	350l 77gal
DIMENSIONS (L x W x H)	
System	1170mm x 700mm x 1535mm 46inch x 27.6inch x 60,4inch
WEIGHT	
System	230kg 508lb
POWER SUPPLY	
	Full load current 8.3A Nominal Power 2kw

Reuse of process water



Water demineralization process with the DyeMansion ROS



OUR COLORS BRING PRODUCTS TO LIFE

From standardized data base to tailor-made recipes

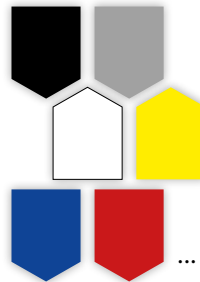
Discover the greatest color database for 3D-printed parts on the market. Using DyeMansion technology, you are able to color your parts reproducibly in almost any color of choice and turn them into high-value, colorful products.



DyeMansion Standard Colors

WHITE RAW MATERIAL

Developed for EOS PA 2200



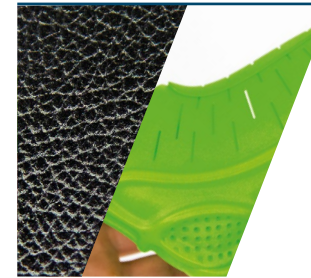
GREY RAW MATERIAL

Developed for HP 3D HR PA 12 & Stratasys High Yield PA 11



Color Systems

170 RAL colors are available, Pantone TPG and other systems on request.



Colors^x

Our extended color lines are the answer to the specific needs of different industries.

AUTOMOTIVE^x COLORS:

Improved light and heat resistance for car interior parts.

NEON^x COLORS:

Vivid neon colors for stunning lifestyle applications.



...



Colors of Choice

Tailor-made corporate & custom colors with no limit, developed individually with our inhouse Color Matching.



...



...

Didn't find the right color?
Try Color Matching!

See page 32



Have a look at our Infosheet Color Database for a **FULL COLOR OVERVIEW**.

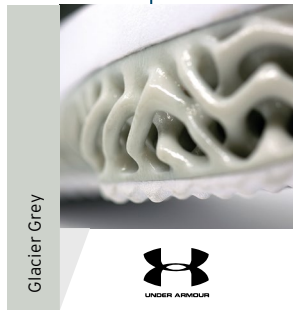
COLORS OF CHOICE COLOR MATCHING

With our color matching you can design 3D-printed parts in your corporate color or any color of choice you like. From replicating the exact color of an injection molded part to the development of special color shades that match skin tones - there are no limitations.



What we need to know for a successful color matching:

1. What's your color wish?
2. How can you share a reference of your color?
3. What's your printing technology, material & surface treatment?



For more information, visit our [WEBSITE](#).



Watch our [VIDEO](#) Color matching explained.

CERTIFIED SOLUTIONS FOR HIGH-END MANUFACTURING

Our technologies & processes meet the requirements of the most diverse industries. From quality management to the certification of our colors and processes, we are committed to providing reliable solutions for high-end manufacturing.



Biocompatibility

Cytotoxicity

- ✓ according to ISO Guidelines ISO 10993-1, ISO 10993-5 & ISO 10993-12

Skin Irritation

- ✓ according to ISO Guidelines ISO 10993-1, ISO 10993-23 & ISO 10993-12



Food Safety

The VaporFuse VF47 Eco Fluid solvent used in the VaporFuse Surfacing process is

- ✓ approved for food contact according to the Commission Regulation (EU) No. 10/2011 (lastly amended by Regulation (EU) No 202/2014), Regulation (EG) No. 1935/2004 and §§ 30, 31 of the German Food and Consumer Good Act LFGB.
- ✓ approved for food contact according to FDA's 21 C.F.R for 3D-printed food-contact articles.



Scratch Resistance

- ✓ according to PV 3952 (2019-03)



Colors

COLOR FASTNESS

- ✓ **Rubbing** according ISO 105-X12
- ✓ **Washing** according ISO 105-C06
- ✓ **Bleaching** according ISO 105-N01
- ✓ **Perspiration** according ISO 105-E04

LIGHT & HEAT RESISTANCE

- ✓ according ISO 105-B06



Statements

- ✓ **REACH** Statement (Registration, Evaluation, Authorisation of Chemicals)
- ✓ **RoHS** Statement (Restriction of Certain Hazardous Substances)



Quality Management

- ✓ according to ISO 9001:2015



For more details and further information regarding material and technology please contact HELLO@DYEMANSION.COM.

INTRODUCING DYEMANSION 360° DIGITAL SERVICES

Your central point for all digital services at DyeMansion: More efficiency, machine availability and profitability of your Print-to-Product workflows

DyeMansion Workflow Center

Monitor your Print-to-Product workflow - anywhere & anytime

- ✓ User-friendly: Cloud-based monitoring solution with historical and real-time data for a traceable, quality-assured and more efficient production
- ✓ Instant updates: Immediate overview of the current status of your DyeMansion post-processing machines - regardless of time and place
- ✓ Easy & accessible: All your DyeMansion machines presented in an intuitive and cloud-based monitoring system

DyeMansion Data Connect

Your direct connection to the machine with a standardized OPC UA interface for easy data exchange with your systems

- ✓ Simplified integration: Enables easy and secure integration of your Print-to-Product workflow into your digital factory environment
- ✓ Complete data set: Provides deeper insights into your DyeMansion machines through a complete set of data.
- ✓ High compatibility & flexibility: Enables open integration with your network's MES/ERP systems. Allows selection of the level of detail required for machine-related data

Easy integration into industry leading production solutions via standardized OPC-UA interface

SIEMENS

nexa3D

3YOURMIND

OQTON

materialise co-am
software platform

...

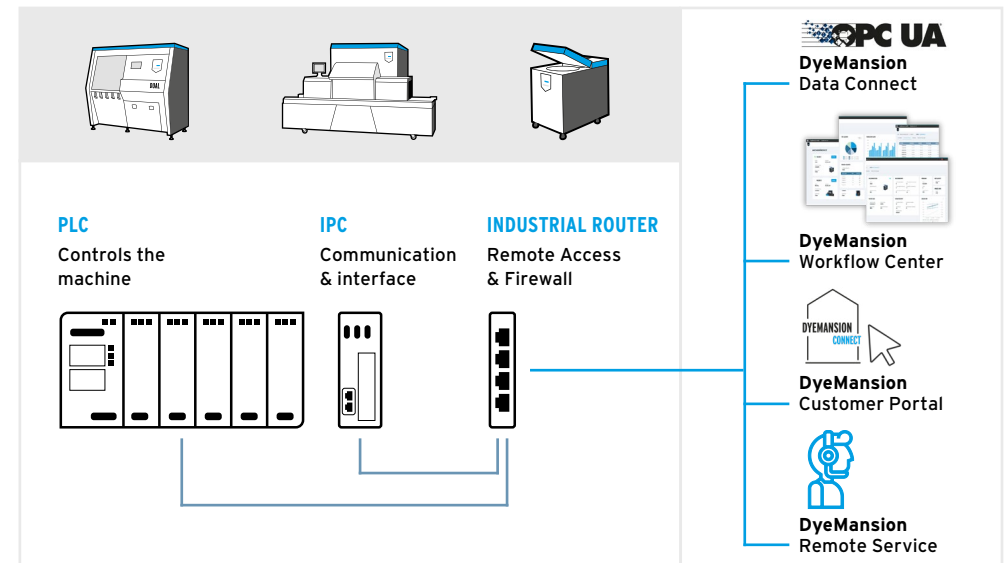


DyeMansion Remote Service

Resource-efficient & fast support for your DyeMansion machines through our service technicians

- ✓ Maximum uptime: Increase the availability of your equipment through direct troubleshooting via secure remote access
- ✓ More efficient collaboration: Ensure targeted support for your staff from trained DyeMansion service technicians
- ✓ Reduced resources: Save valuable resources with fast and efficient remote service

VISUALIZATION CONTROL CABINET

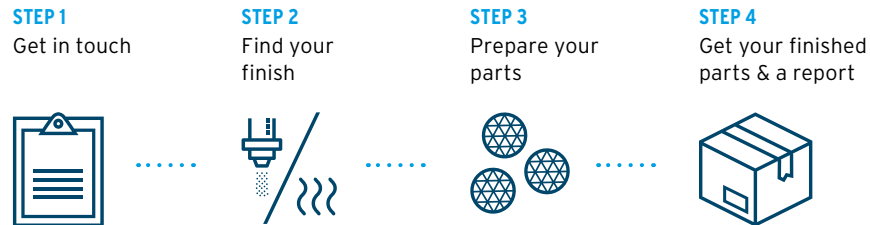


OUR BENCHMARK & APPLICATION CENTERS

In our Benchmark & Application Centers in Munich and Austin, our experts help you find the right finish for your needs.

Benchmarking

You are not familiar with our technology yet and want to try it? We will find the right finish for you. Try our finishing touch on your own parts - do a live benchmark in our Benchmark & Application Centers or send us your raw parts.



On-Demand Finishing

Your 3D-printed parts need a finishing touch? We can step in for you and offer our finishing solutions as a service. For high-volume part production including finishing, we recommend getting in touch with one of our various service bureaus via our global Production Partner Platform.



For step by step instructions, read our **GUIDELINES.**



Munich



Austin, TX

Application Consulting

Are you looking to exploit the full potential of AM for your product ramp up? Our Application Engineers are on your side. Adapt all processes to a new material, find the right finish for your application, document and measure the surface and color quality, quality management.

Our Application Consultants support you every step of the way and help you bring your application from a napkin sketch to a final product. It can be tailored according to your specific application and together we can discover how best to combine your technologies with our Print-to-Product workflow.

BASIC SERVICES

- ✓ Product consulting
- ✓ Workflow consulting
- ✓ Workflow specifications



APPLICATION SPECIFIC SERVICES

- ✓ Program support
- ✓ Project support



Color Matching

You have an individual color wish for your parts? We can match your wish and develop the color you need for your material and finish. Corporate colors, skin tones, Pantone colors and more.

FIND OUT MORE

> at page 30 to 32

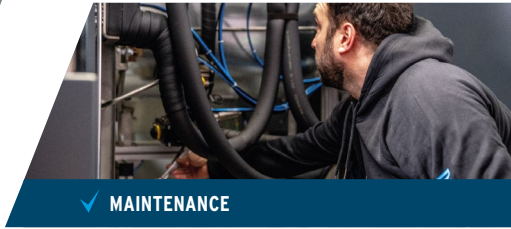
TECHNICAL SERVICE

We have you covered through the whole product lifecycle



✓ INSTALLATION

No matter if remote or on site, our Technical Service team will install your DyeMansion machine quickly & efficiently.



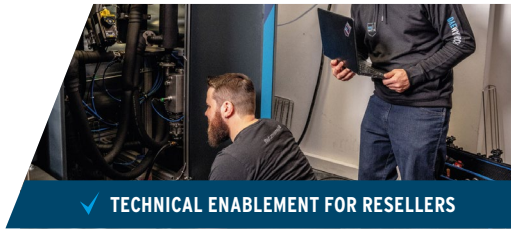
✓ MAINTENANCE

Regular maintenance of your machines is serious business! Why? This helps reduce unexpected downtime and ensures the quality standard you want for your parts. You should maintain all your systems once a year.



✓ TROUBLESHOOTING & REPAIR

Do you have an issue with one of our products? We have you covered. Our Technical Service team is here to find the right solution. From identifying the issue to performing troubleshooting and repairs - remotely or on site.



✓ TECHNICAL ENABLEMENT FOR RESELLERS

We provide Technical Enablement training and coaching for our certified resellers, to ensure that they are also capable of providing the best possible service for their customers.

GET MORE TECH INSIGHTS WITH OUR WHITEPAPERS

CLEANING

Automated depowdering
Gentle & efficient

[DOWNLOAD HERE](#)

SURFACING

State-of-the-art surfacing
What current technologies can achieve on powder bed fusion parts

[DOWNLOAD HERE](#)

COLORING

Manual pot dyeing vs. industrial deepdye coloring
for powder bed fusion parts

[DOWNLOAD HERE](#)

Automotive Colors^x
Meeting light & heat resistance standards for automotive interior parts

[DOWNLOAD HERE](#)

Dyeing of SLS parts in RAL
Opportunities and limitations

[DOWNLOAD HERE](#)

Dyeing of MJF parts
First ever vibrant colors for grey HP Multi Jet Fusion parts

[DOWNLOAD HERE](#)

Dyeing of SAF parts
Printed on Stratasys H350 Series 3D printers

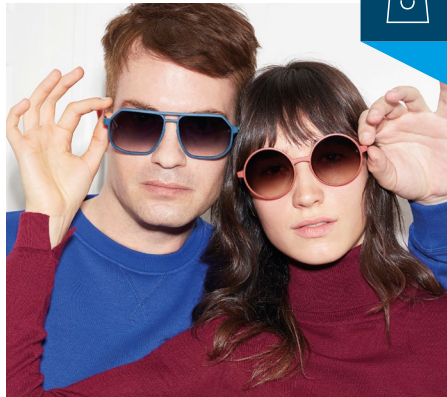
[DOWNLOAD HERE](#)

AT HOME IN EVERY INDUSTRY

DyeMansion enables AM applications



CONSUMER GOODS & LIFESTYLE



"Our products only became marketable when it became possible to apply the colors that appealed to the consumers."

Sven Götti
CEO, Götti Switzerland

götti
SWITZERLAND



...



PRODUCTION & INDUSTRY



"With the DyeMansion Print-to-Product workflow we can finally produce competitive applications in series. The reproducible and flexible process allows us to make changes to design and functions of our applications quickly."

Konstantin Brunnbauer
VP Production, ProGlove

PROGLOVE JABIL ...



HEALTHCARE & MEDICAL



"The Cytotoxicity and Skin Irritation certificates of the DyeMansion colors are helping us a lot to get our exomotion hand one CE-certified."

Dominik Hepp
CEO & Co-Founder, HKK Bionics

HKK
Bionics

POHLIG ...



MOBILITY, TRANSPORT & LOGISTICS



"With DyeMansion's expertise we were able to develop a specific and reproducible Daimler Buses color shape for interior parts."

Daniel Kluth
Category Buyer 3D-printing, Daimler Buses

DAIMLER



...



SERVICE PROVIDERS & CONTRACT MANUFACTURERS

Overview page 42/43

PROTOTAL

materialise
innovators you can count on

...

DYEMANSION PARTNER PLATFORM



Our production partners help you to find the right finish for your applications.

United Kingdom

PRINTINGPORTAL | Inc Eng
 prototypeprojects | 3DPRINTUK
 PARAGON Rapid Technologies | DMC Digital Manufacturing Centre
 Midlands 3D 3D Print Manufacturing | ALL3DLabs | Lpe

Belgium

materialise
 innovators you can count on

Finland

3D FORM TECH

Denmark

PROTOTAL | DAMVIG

Sweden

addema ACTIVE MANUFACTURING
 PROTOTAL
 PROTOTAL | GTP

Germany

hasenauer & hesser | FKM LASER SINTERING
 FORMRISE 3D PRINTING
 blue production LAYER MANUFACTURE
 STOMOPRINT 3D
 3DBAVARIA | W-3D

Poland

materialise
 innovators you can count on

Czech Republic

SVOTT

Austria

1zu1 prototyping manufacturing tooling | DISTech Diverse Technologies

Switzerland

proArtis Fabrics in additive Fertigung | EXAPARTS
 RAPID MANUFACTURING
 GRIBI 3D Druck

Canada

ADVANTAGE Engineering Inc | solaxis Injection Manufacturing

USA

JABIL | 3D LOGICS | Endeavor 3D
 JawsTec | strataSYS DIRECT MANUFACTURING | TUSCANO MACHINE

South Africa

akhani3D

Italy

tsl

France

sculpteo A brand of BASF - We create chemistry

Spain & Portugal

MAUSA Precision Models | c3u Customplants

Japan

YAM YOKOITO AM

Singapore

JABIL

Israel

3Dreams additive printing - accelerating results

China

Mophene3D 墨分三维



FULL OVERVIEW
 Use this QR code to get more information and an overview of all our production partners.

DYEMANSION PARTNER PLATFORM



Our Sales Partners help you expand your current offer with high-end post-processing equipment.



FULL OVERVIEW

Use this QR code to get more information and an overview of all our sales partners.

Switzerland



United Kingdom



Germany



Austria



Sweden



Netherlands



Poland



Czech Republic



Romania



Spain & Portugal



Italy



3D Printing solutions for Industry
a SolidWorld Group company

Israel



China



Korea



Japan



USA



United Arab Emirates



Australia



Singapore



India



South Africa



With our Platform Partners we enable high-quality AM production workflows & set-up production lines of tomorrow.



BECOME OUR PARTNER

Alliances are the basis to transform the manufacturing industry together!
Join the largest industrial post-processing platform for Additive Manufacturing worldwide and become our partner.



TRYMANSION

Start with a free benchmark

Not familiar with DyeMansion technology yet? Try our finishing options and colors on your on parts and participate in TryMansion. We are offering live benchmarks in our facilities as well as the processing of your samples through our On-Demand Finishing. Together with your finished parts, you will get a benchmark detailed report.



For more information,
visit our [TRYMANSION WEBSITE](#).

SPEAK WITH US

DyeMansion GmbH

Robert-Koch-Strasse 1
82152 Planegg-Munich
Germany

+49 89 4141705 00
hallo@dyemansion.com

DyeMansion North America Inc.

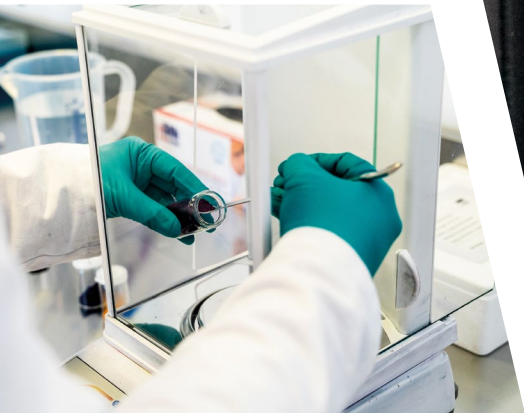
4020 S. Industrial Drive, #160
Austin, TX, 78744
United States

+1 737 205 5727
hello@dyemansion.com

DyeMansion DyeMansion WeAreDyeMansion WeAreDyeMansion WeAreDyeMansion



For more information,
visit our [WEBSITE](#).



HOME OF A
COLORFUL
FUTURE.